

Halloween Window Display

Materials

- Card (check the recycling; cereal and frozen pizza boxes are perfect!)
- Pencil
- Marker
- Scissors
- Black Paint
- Paint brush
- Sellotape



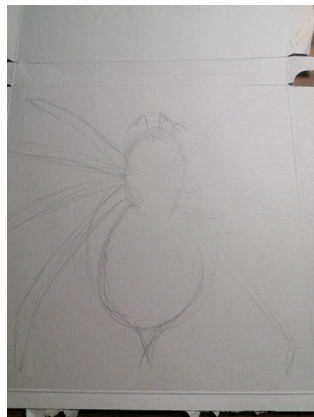
Method

Carefully dismantle the cereal box and spread it out.

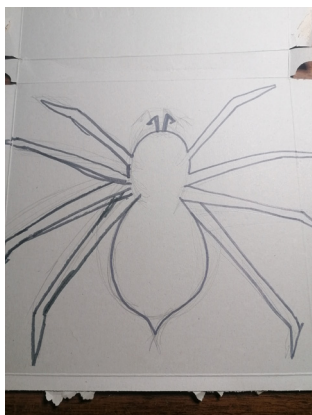
Pick something Halloween themed like a pumpkin, witch's hat, ghost etc, you can be as imaginative as you want!

Begin sketching it on the card.

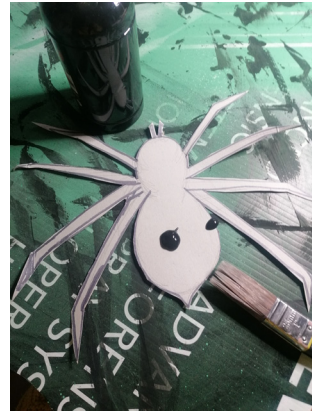
Make your sketch as large as possible, fill the space.



When you are happy with your sketch, go around it with a black marker and cut it out.



Paint it black, you might need 2 coats of black paint.



When the paint is dry you can stick them in your window with clear sellotape.



If you need help to show off your silhouettes at night time, ask a parent or guardian to help peg up a white sheet in the window and shine a table lamp towards it.

Tip

Don't worry about making mistakes when cutting! Pieces can be easily taped together from the back! If you find it hard cutting out eye holes for the bat you can cut through the card completely first and then just tape it back together again after the black paint has dried. You can be as imaginative as you want, maybe you could create an entire scary scene or characters from your favourite movie or book!

